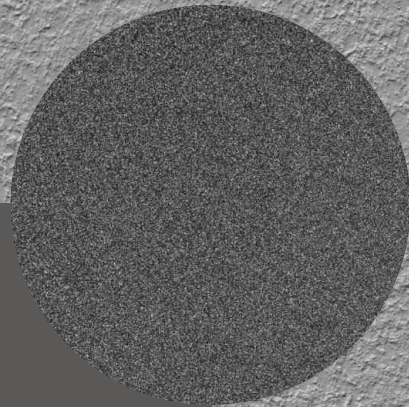
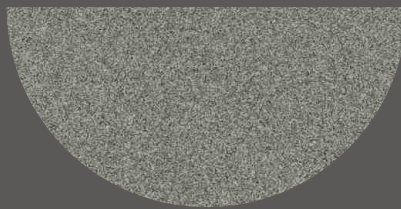
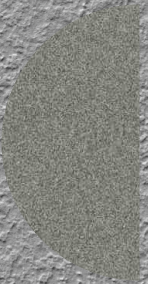




**DONATO**

FULL BODY VITRIFIED TILES

**15MM**  
THICKNESS



Full  
**BODY**  
VITRIFIED TILES

600X  
600MM



## ABOUT US

We are Donato Vitrified Private Limited. Strategically located at Morbi, the ceramic hub of India, we have been offering a range of vitrified tiles in various designs, textures and styles to cater to the changing demands of our huge clientele.

Step into a world of timeless charm and modern durability with our Rustic Punch Vitrified Tiles. Measuring 600x600 mm, these tiles are designed to bring a touch of rustic elegance to any space, blending the raw beauty of natural textures with the strength and versatility of vitrified tiles. With their natural aesthetic, exceptional durability, and versatile applications, these tiles are an excellent choice for timeless elegance in each space. Transform your interiors with the unique beauty and lasting quality of Rustic Punch Vitrified Tiles.

Full  
**BODY**  
VITRIFIED TILES

## TIMELESS DESIGN, INFINITE STRENGTH

Discover the ultimate combination of strength, beauty, and longevity with our Full Body Vitrified Tiles. Engineered for perfection, these tiles are designed to withstand the test of time while delivering an exquisite aesthetic that enhances any space.

Featuring Unmatched Durability, Superior Aesthetic, Versatility, Low Maintenance, Environmental Resistance, Precision and Consistency.

These Tiles represent the pinnacle of tile innovation, offering an unbeatable combination of strength, beauty, and versatility. Their uniform color, high resistance to wear and tear, and ease of maintenance make them an excellent choice for both residential and commercial projects. Elevate your spaces with the enduring elegance and reliability of full body vitrified tiles.

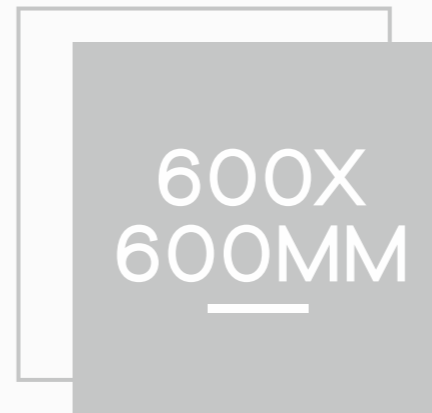
[www.donatovitrified.com](http://www.donatovitrified.com)





  
15MM  
Thickness



  
600X  
600MM

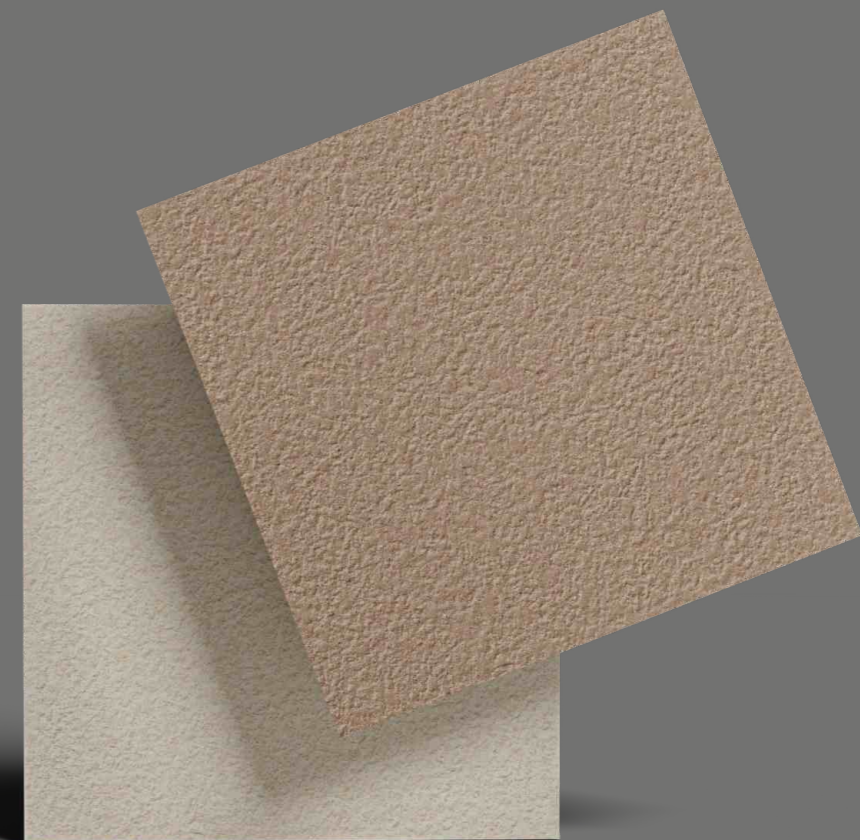
The 600x600 mm size is highly versatile, making these tiles suitable for both residential and commercial applications. It offers a balanced size that provides a sophisticated and modern look to any space. 600x600 mm Full Body Vitrified Tiles are an essential choice for modern construction and interior design due to their versatile applications, superior durability, elegant aesthetics, and low maintenance.

## GLOSSY FINISH, INFINITE RADIANCE.

Elevate your space with the luxurious shine and refined elegance. Combining exceptional durability with a stunning glossy finish, these tiles are designed to bring a touch of sophistication to any environment.

The high-gloss surface reflects light beautifully, adding a sense of space and brightness to any room.

The sleek, polished look creates a contemporary and sophisticated aesthetic, perfect for modern interiors.





TRANSFORM  
YOUR SPACE WITH  
RUSTIC GRACE

15MM

THICKNESS



STONET BRUTE



600x 600MM | 15MM Thickness

Full  
**BODY**  
VITRIFIED TILES





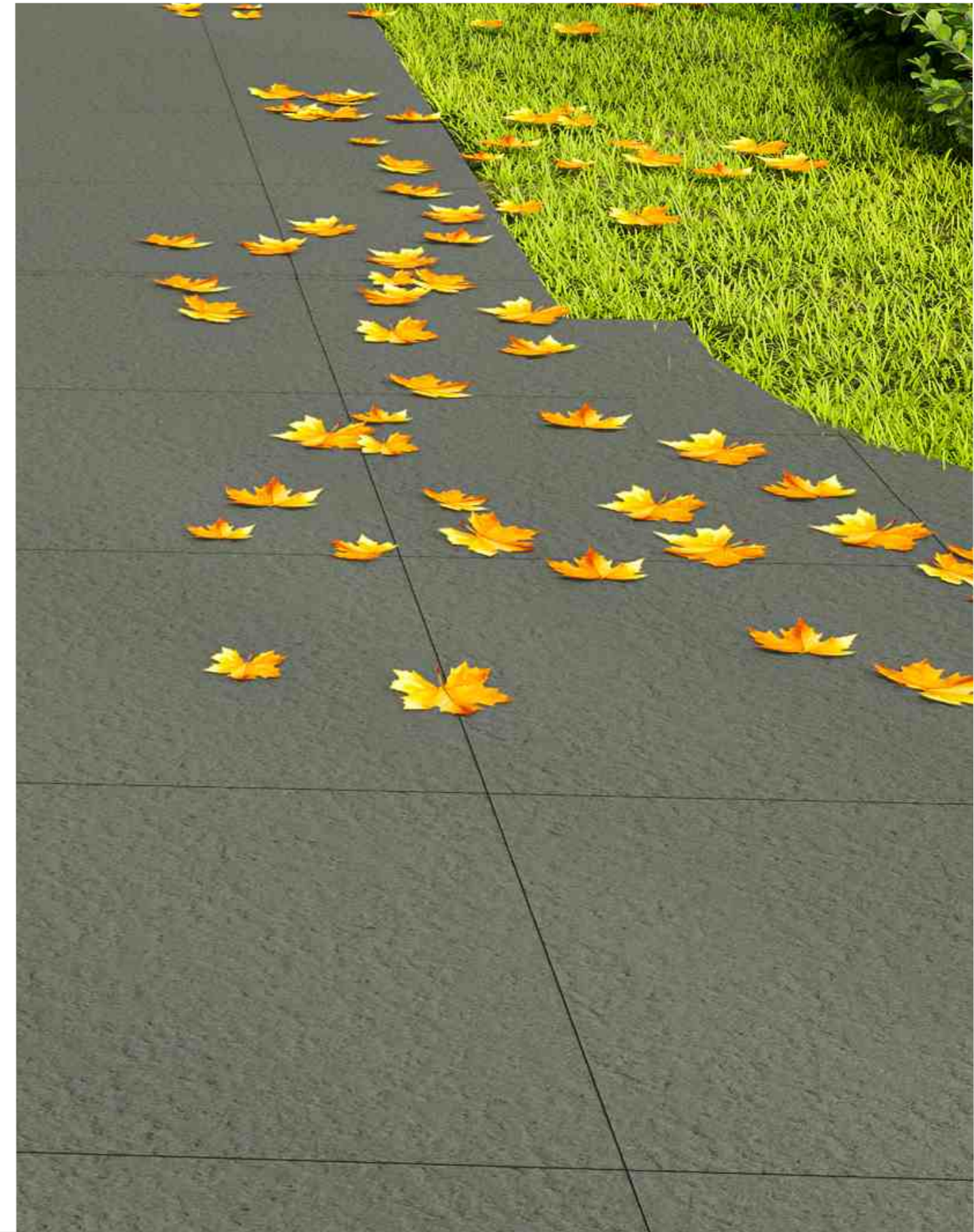
STONET BRUTE

15MM

THICKNESS



STONET COTTO



600x 600MM | 15MM Thickness





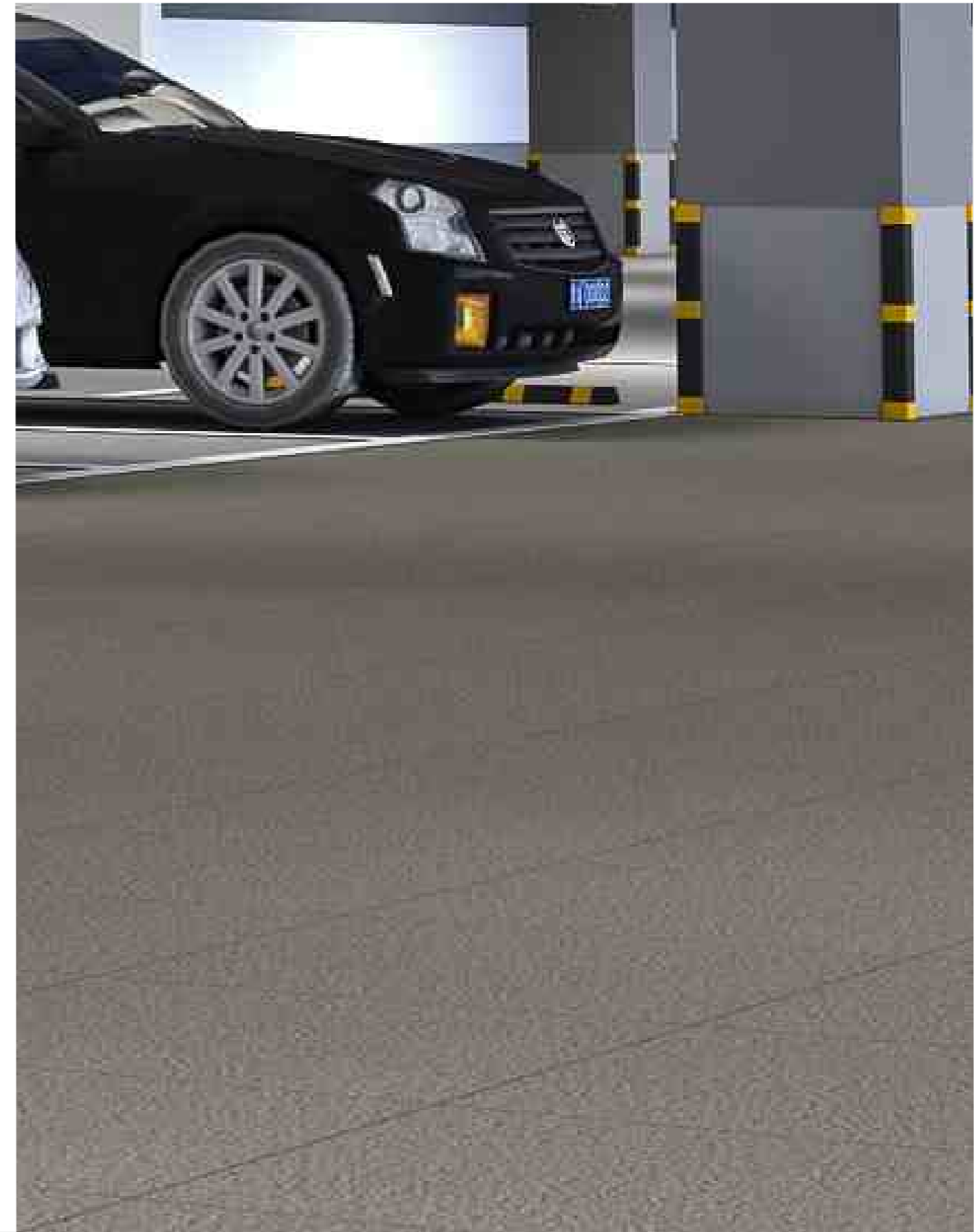
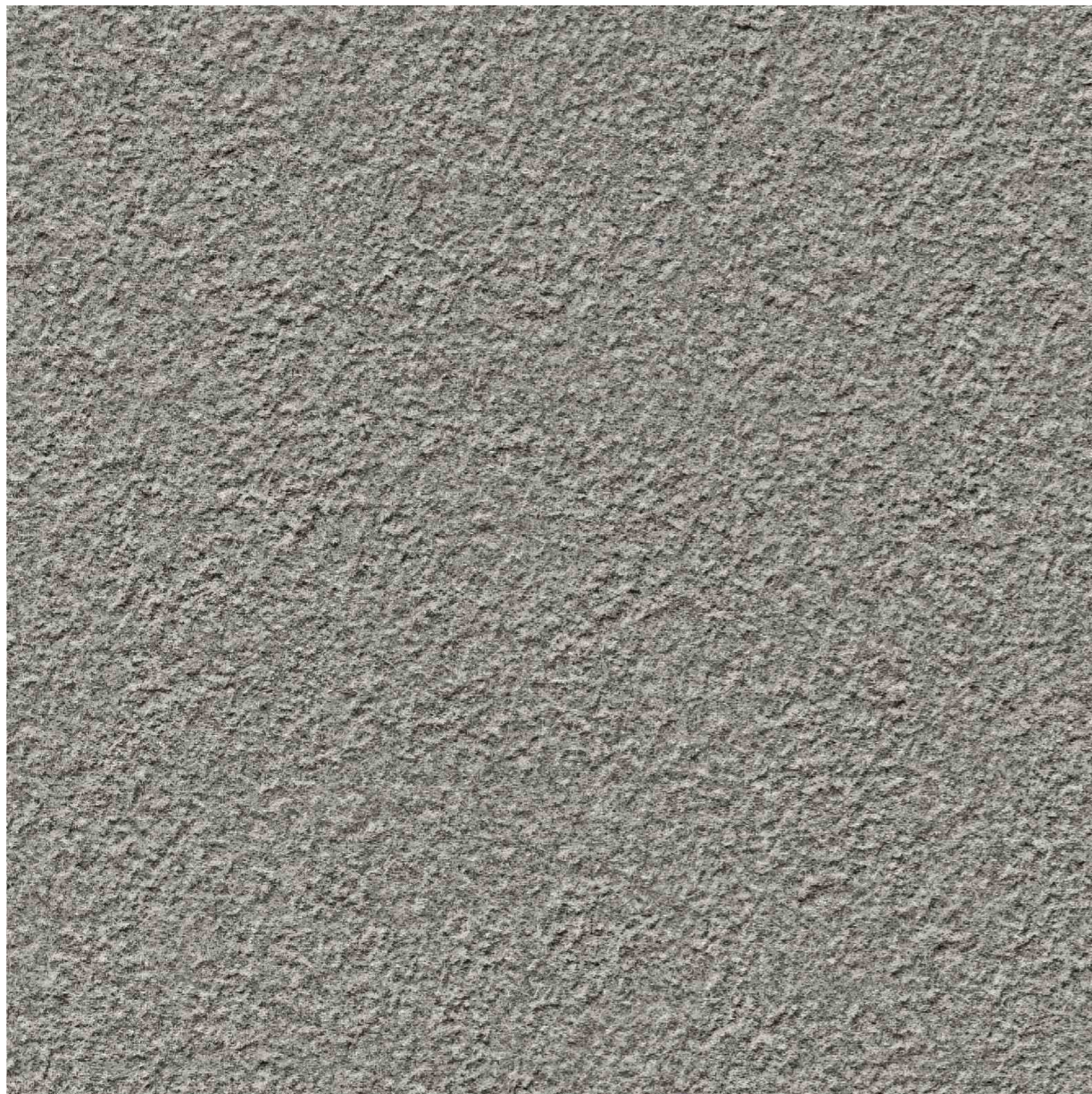
STONET COTTO

15MM

THICKNESS



STONET ELENA



600x 600MM | 15MM Thickness

Full  
**BODY**  
VITRIFIED TILES



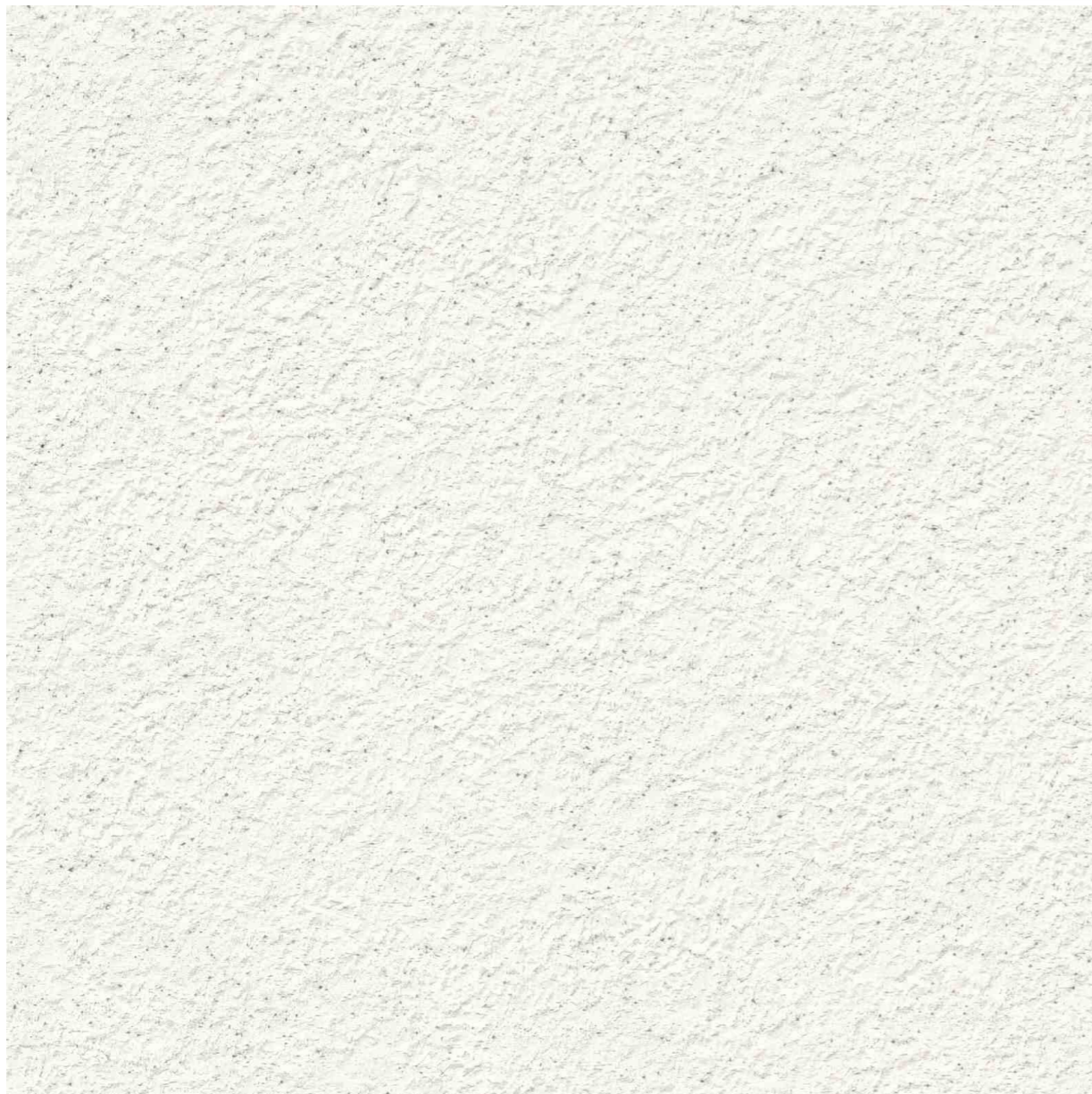
B2  
4



4



STONET EVEREST

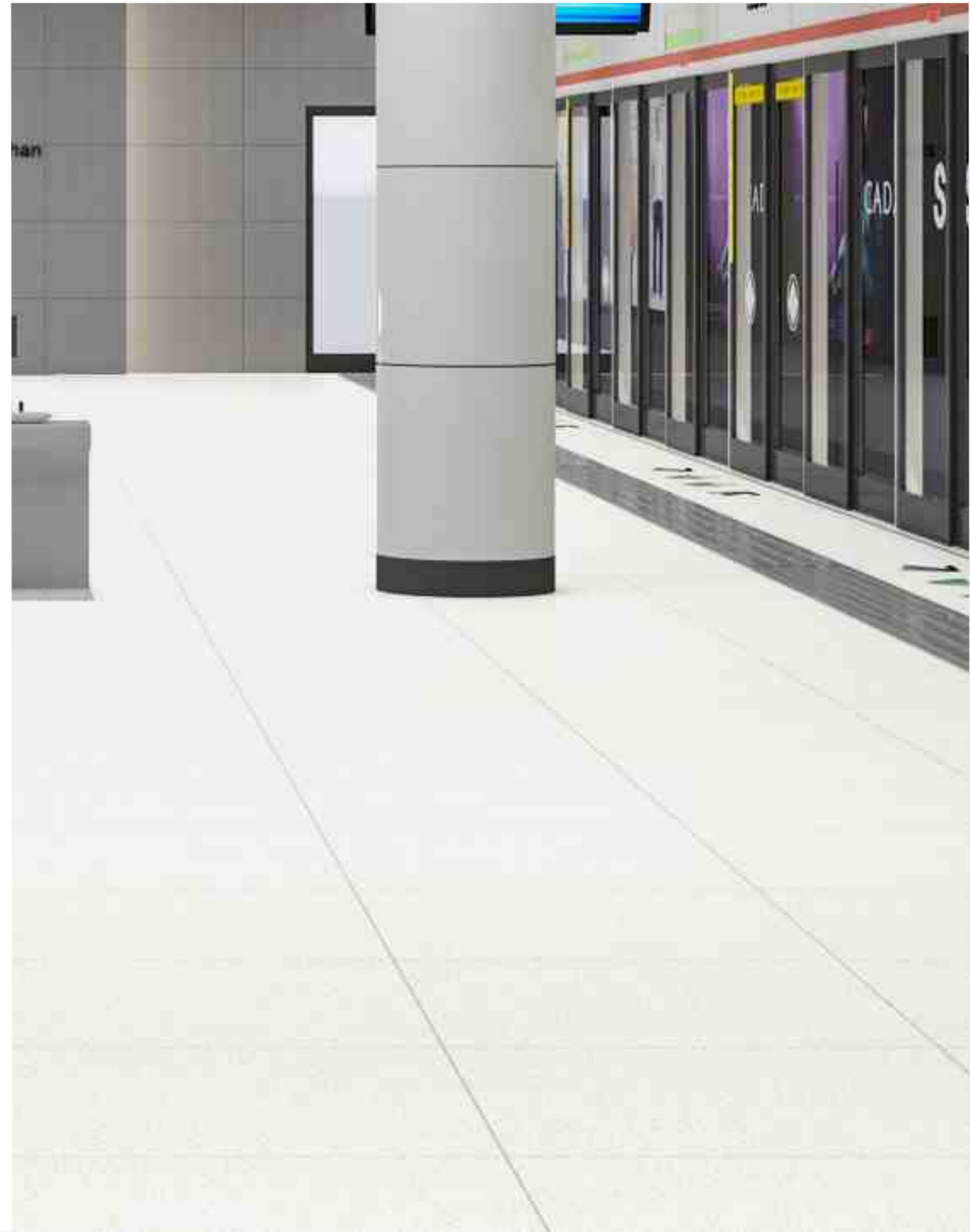


600x 600MM | 15MM Thickness

Full  
**BODY**  
VITRIFIED TILES

15MM

THICKNESS



Maying River Station  
The Mayinghe Station

← 16Line16 **Maying River Station** 16Line16 →  
Zhoujiahe direction To Zhoujiahe Station      The Mayinghe Station      Direction to National Museum Center To GuoBoZhongXin Station

EXIT 

 EXIT

Maying River S  
The Mayinghe Sta

15MM

THICKNESS



STONET MIST



600x 600MM | 15MM Thickness



IS THE NEW STRONG

STONET MIST



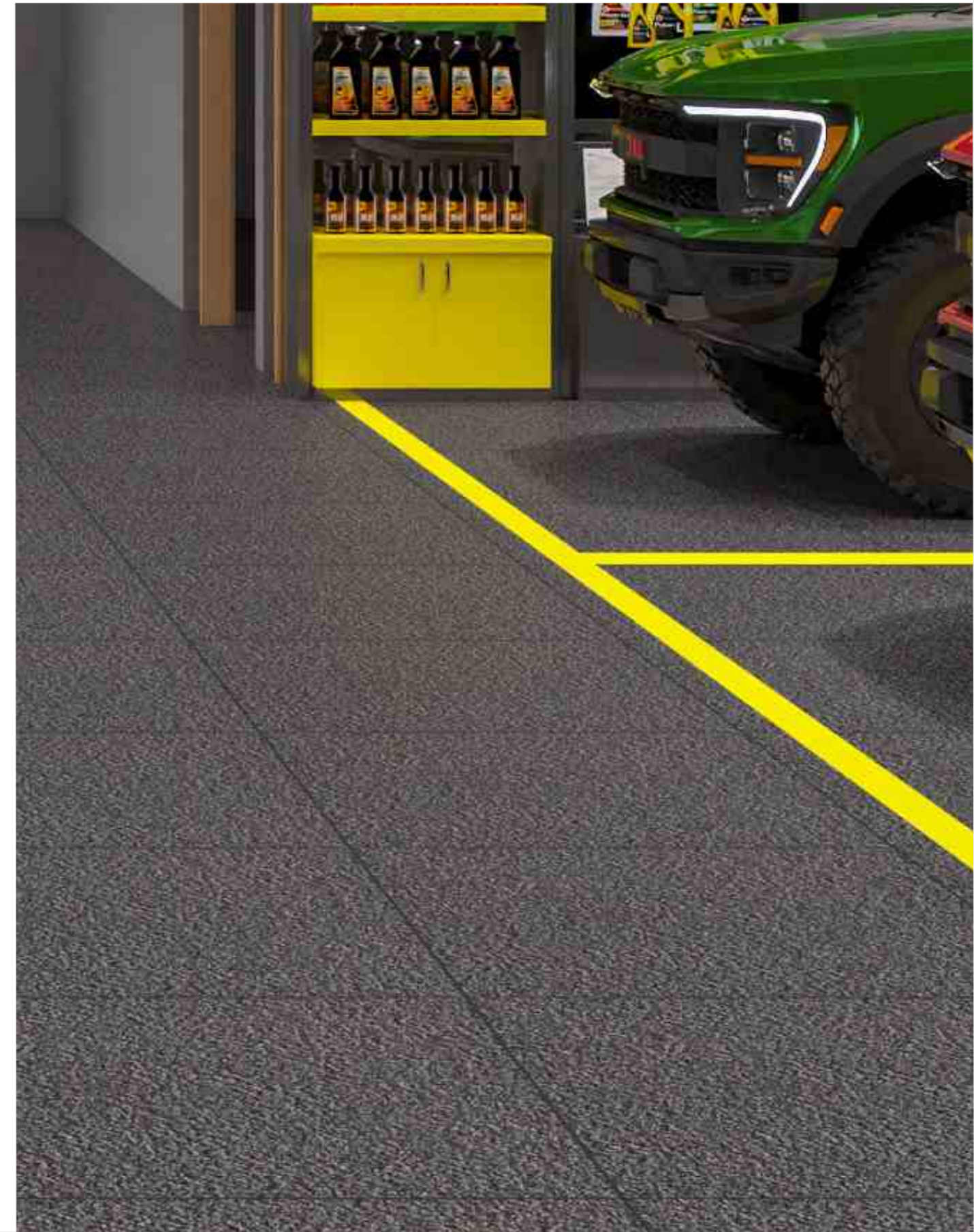
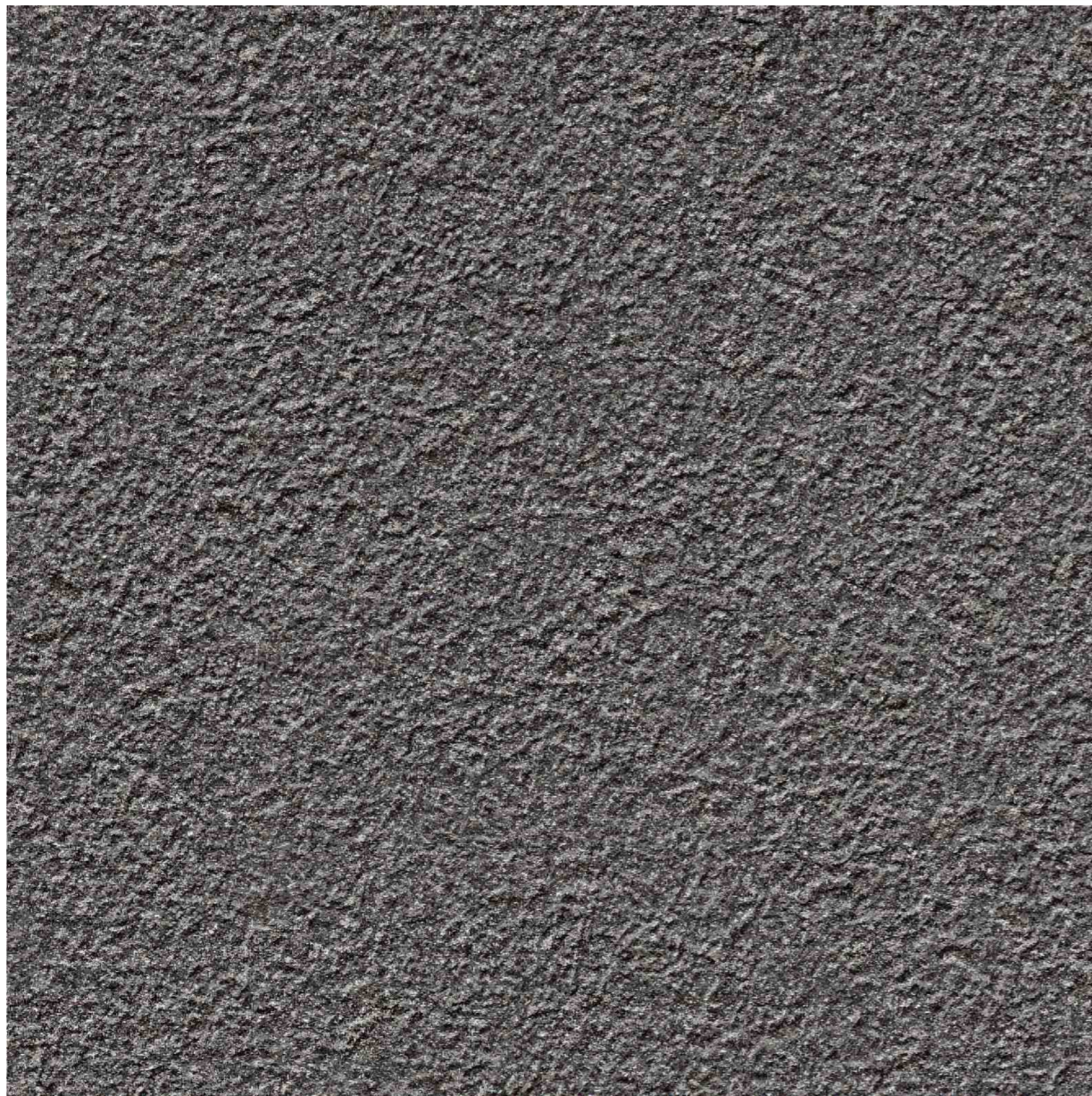
[www.donatovitrified.com](http://www.donatovitrified.com)

15MM

THICKNESS



STONET OXIDE



600x 600MM | 15MM Thickness

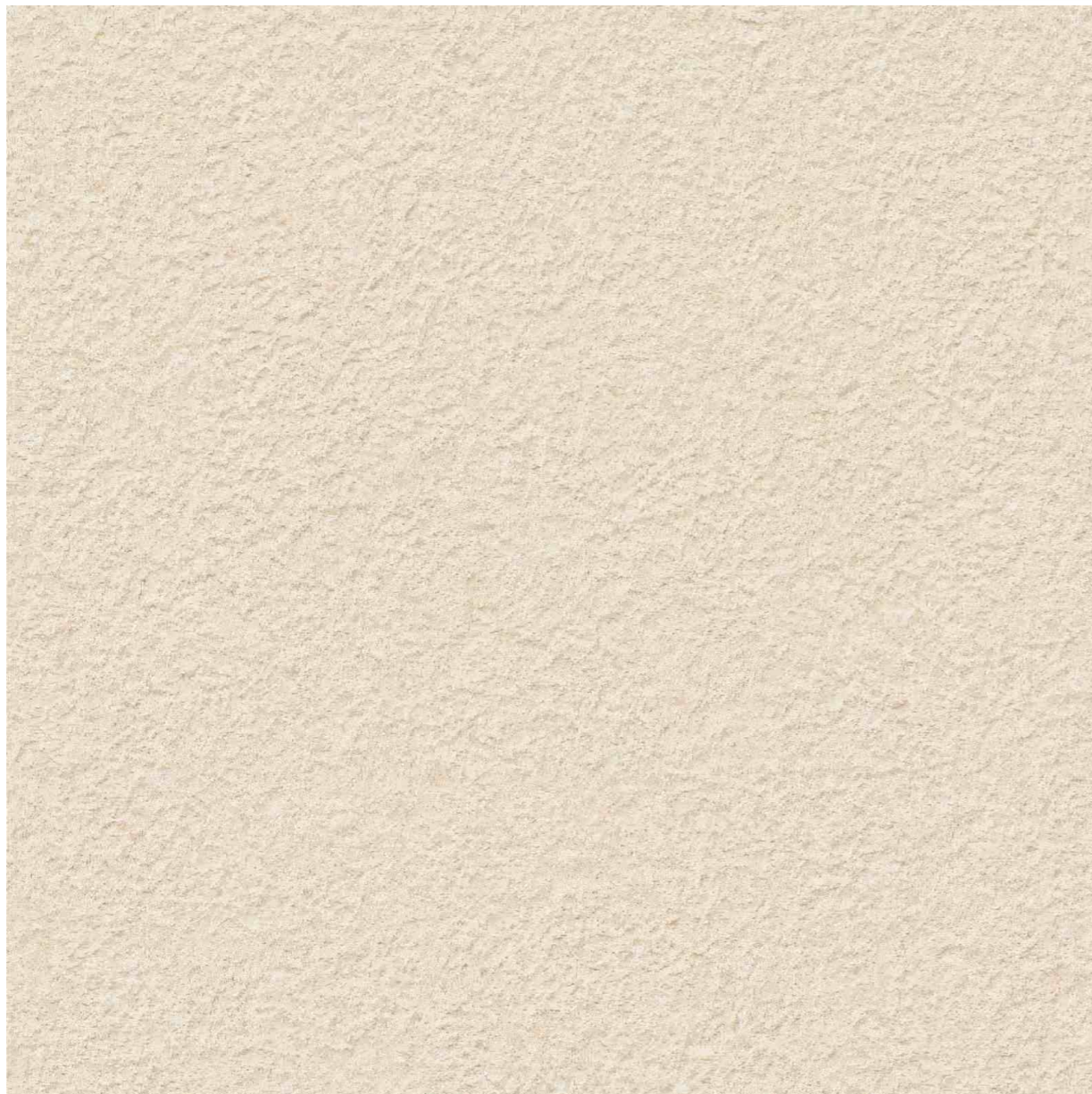
Full BODY VITRIFIED TILES





STONET OXIDE

STONET SAHARA

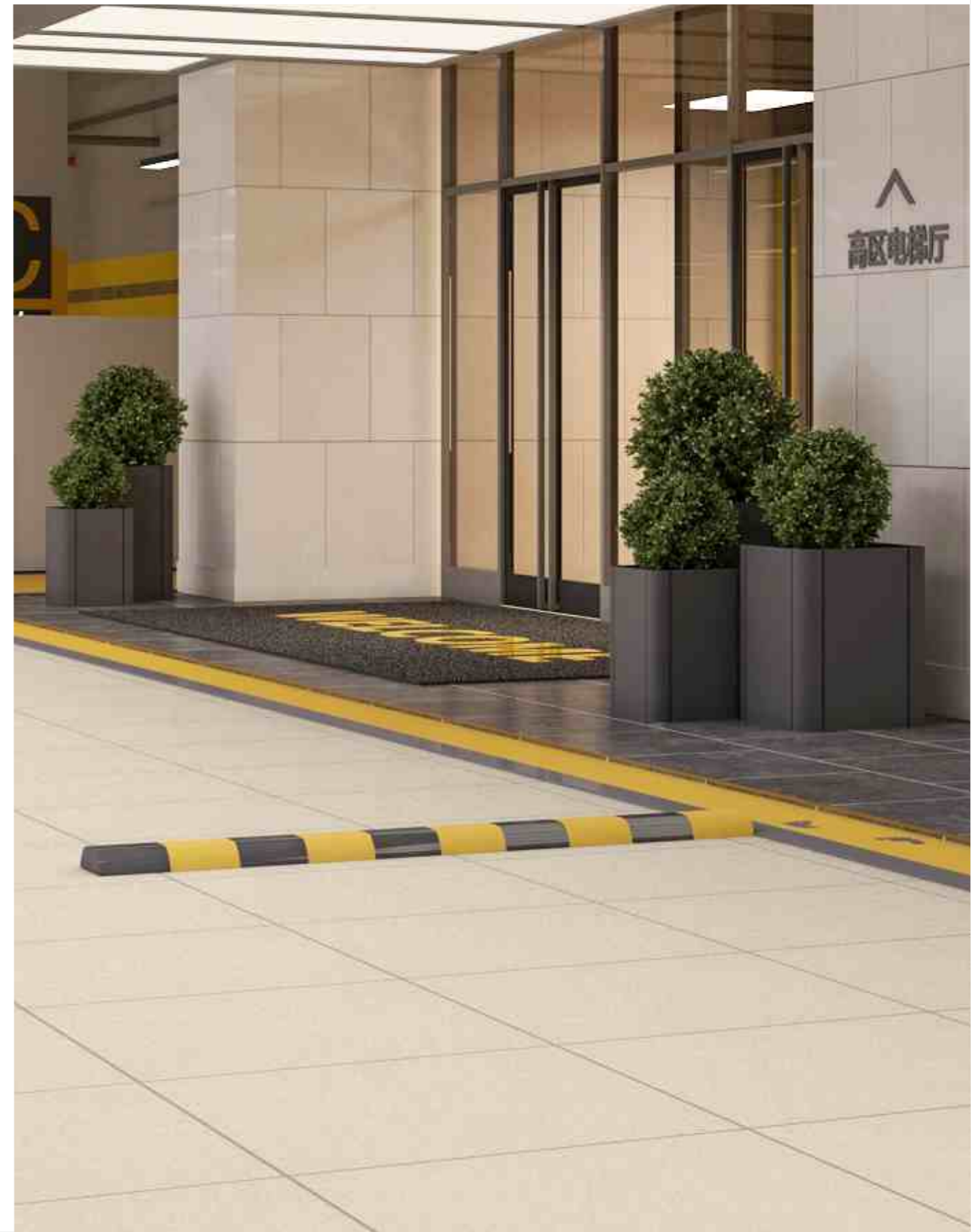


600x 600MM | 15MM Thickness

Full  
**BODY**  
VITRIFIED TILES

15MM

THICKNESS





## TECHNICAL SPECIFICATION

No.	TECHNICAL DETAIL	INTERNATIONAL STD, ISO 13006/EN 176, B1A	DONATO VALUES	METHOD OF TESTING
1	Deviation in Length & Width	±0.6%	±0.1%	ISO 10545-2
2	Deviation in Thickness	±5%	±2%	ISO 10545-2
3	Straightness of Sides	±0.5%	±0.1%	ISO 10545-2
4	Rectangularity	±0.6%	±0.1%	ISO 10545-2
5	Surface Flatness	±0.5%	±0.1%	ISO 10545-2
6	Hardness on Mohs Scale	> 6	> 7	EN 101
7	Water Absorption	< 0.5%	< 0.05%	ISO 10545-3
8	Flexural Strength (Mor)	> 35 N/m <sup>2</sup>	> 40 N/m <sup>2</sup>	ISO 10545-4
9	Abrasion Resistance	< 175 mm <sup>3</sup>	< 145 mm <sup>3</sup>	ISO 10545-6
10	Skid Resistance	> 0.4	> 0.4	ISO 10545-17
11	Bulk Density	> 2	> 2.4	DIN 51082
12	Frost Resistance	Frost Proof	Frost Proof	ISO 10545-12
13	Chemical Resistance	No Damage	No Damage	ISO 10545-13
14	Thermal Shock	No Damage	No Damage	ISO 10545-9
15	Thermal Expansion	< 9 x 10 <sup>-6</sup>	< 6 x 10 <sup>-6</sup>	ISO 10545-8
16	Stain Resistance	Resistant	Resistant	ISO 10545-14
17	Moisture Expansion	Nil	Nil	ISO 10545-10
18	Glossiness	Gloss Meter	Min 90 Reflection	ISO 10545-2
19	Breaking Strength	1300 N	2000 N	ISO 10545-4

## PACKING DETAIL

No.	SIZE	PCS / BOX	Sq. Mtr.	Sq. Ft.
01	600mm X 600mm	2	0.72	7.75

**DISCLAIMER :** Company reserves the right to delete & amend either totally or partially, any of the colors, shapes, sizes, references and other technical specifications contained in this catalogue at anytime. The Colors of tiles shown in this catalogue are purely illustrative and limited to printing process. Please refer actual sample before final selection. The details of sizes, colors and references should be verified for typographical errors.

## APPLICATIONS



### DONATO VITRIFIED PVT. LTD.

Opp. Lakhdirpur Village, Lakhdirpur Road,  
8-A, National Highway, Morbi - 363 642, Gujarat, INDIA

info@donatovitrified.com | marketing@donatovitrified.com

www.donatovitrified.com

South Zone : +91 90999 37508 | West Zone : +91 90999 37513  
North Zone : +91 90999 37512 | Other Zone : +91 90999 37503

 customer care  
**+91 90999 37516**