



An ISO 9001:2015  
CERTIFIED COMPANY



**DONATO**  
FULLBODY VITRIFIED TILES



**DONATO**  
FULLBODY VITRIFIED TILES

**DONATO VITRIFIED PVT. LTD.**

Opp. Lakhdirpur Village, Lakhdirpur Road,  
8-A National Highway, Morbi - 363 642, Gujarat, India

E-Mail : [info@donatovitrified.com](mailto:info@donatovitrified.com) | [marketing@donatovitrified.com](mailto:marketing@donatovitrified.com)

South Zone : +91 90999 37508 | North Zone : +91 90999 37512 | West Zone : +91 90999 37513 | Other Zone : +91 90999 37518



Customer Care  
**+91 90999 37516**

**FULLBODY** VITRIFIED TILES

[www.donatovitrified.com](http://www.donatovitrified.com)

**600X1200MM | 600X600MM**

**SALT & PAPER  
SERIES**



## SIZE & SURFACE

SALT & PAPER SERIES

Available Size :

600X  
1200MM

600X  
600MM

The **Salt & Paper collection** are available in 4 punches making it feasible to install them in outdoor as well as heavy pedestrian area to create an appropriate ambience. These tiles are available in single format to choose from making this collection suitable for all kind of applications from floor to pathways and water body area.

Surface : **4**

Genesis | Polished

Crest | Satin

Rock | Rustic

Lapato

## 9MM THICKNESS



## PRODUCT ADVANTAGES



Water  
Proof



Easy to  
Install



Stain  
Resistant



Chemical  
Resistant



Scratch  
Resistant



Crazing  
Resistant



Frost  
Resistant



Extremely  
Durable



Easy to  
Clean



Luxurious  
Look



Fire  
Resistant

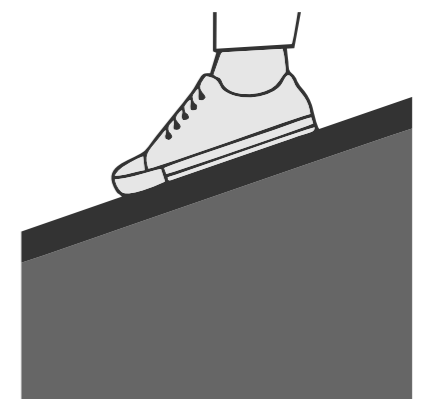


Hygienic Surface

## THE ANTI-SKID SURFACE

SAFER, DURABLE & RELIABLE

The anti-skid surface is the result of increasing demand of fullbody tile for the high performance environment due to its popularity in various uses and applications. Main candidates for antiskid surface are wet areas that are exposed to moisture and water. The finish has an amazing ability to roughen the tile surface without changing its design.



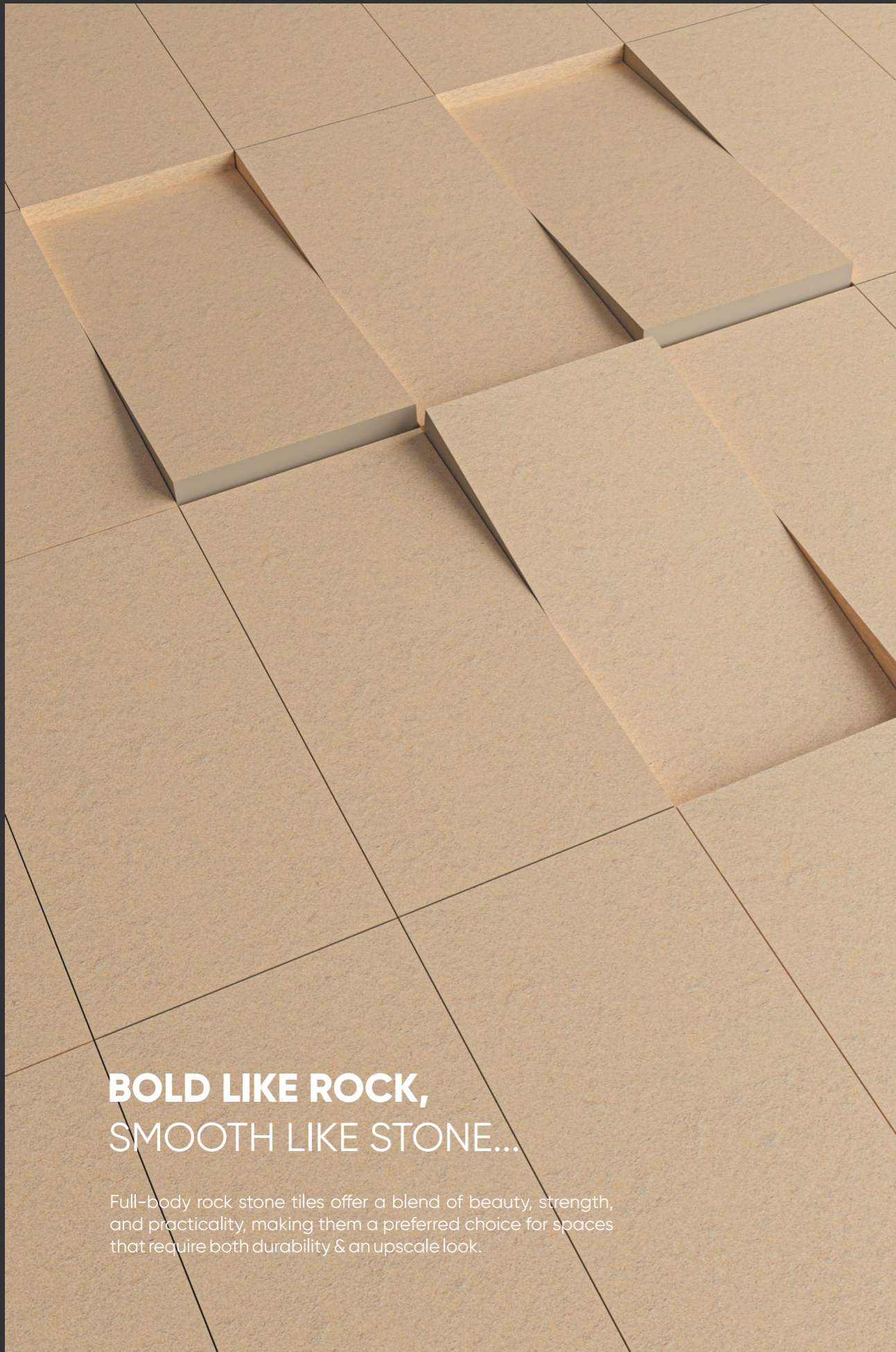
[www.donatovitrified.com](http://www.donatovitrified.com)

FULL BODY VITRIFIED TILES

## CRAFTED FOR STRENGTH, STYLED FOR LIFE...

By beautifying the indoors and outdoors. The **Rock stone collection** comes in multiple format with various shades of color, which make it highly suitable for all kinds of spaces. Along with being a perfect fit, this collection will also uplift the ambiance of your space.





## BOLD LIKE ROCK, SMOOTH LIKE STONE...

Full-body rock stone tiles offer a blend of beauty, strength, and practicality, making them a preferred choice for spaces that require both durability & an upscale look.

SALT & PAPER SERIES

VITRIFIED TILES  
**FULLBODY**

## SURFACE FOR EVERY AREA

APPLICATION AREA



Residential  
Spaces



Commercial  
Spaces



Malls &  
Restaurants



Public  
Spaces



Sport  
Spaces



Schools



Hospitals



Outdoor



External  
Wall Covering



Bathrooms



Kitchens



Airports



600X1200MM | 600X600MM



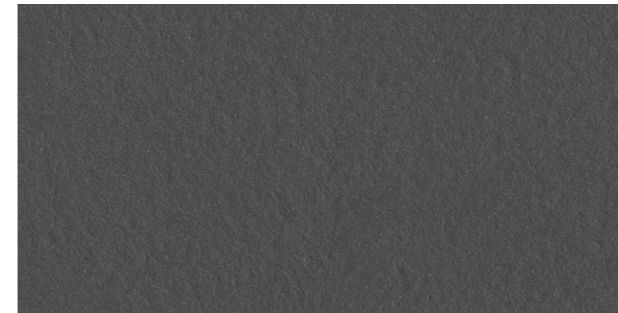
## 600X 1200MM



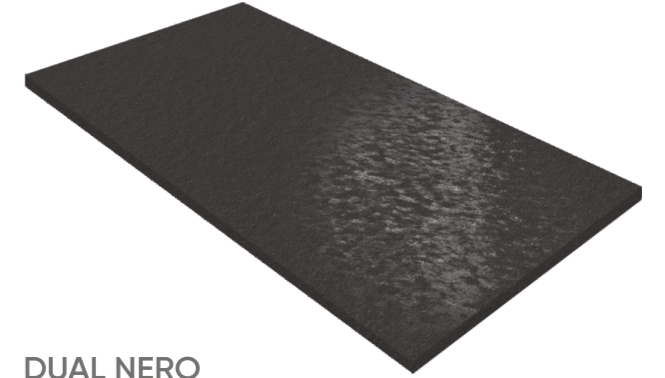
**GENESIS NERO**  
FINISH : POLISHED



**CREST NERO**  
FINISH : SATIN

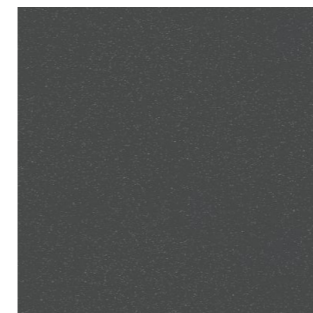


**ROCK NERO**  
FINISH : RUSTIC

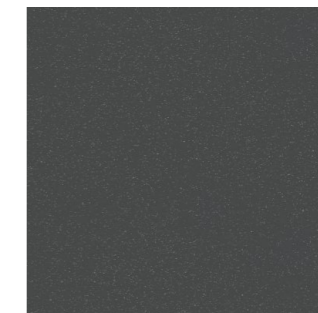


**DUAL NERO**  
FINISH : LAPATO

## 600X600MM



**GENESIS NERO**  
FINISH : POLISHED



**CREST NERO**  
FINISH : SATIN



**ROCK NERO**  
FINISH : RUSTIC



[www.donatovitrified.com](http://www.donatovitrified.com)

**SALT & PAPER SERIES**

SALT & PAPER SERIES

600X1200MM | 600X600MM



SALT & PAPER SERIES

600X1200MM | 600X600MM

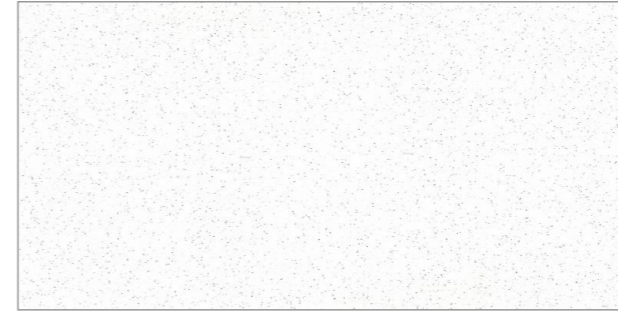


SALT & PAPER SERIES

VITRIFIED TILES  
**FULLBODY**

  
**DONATO**  
FULLBODY VITRIFIED TILES

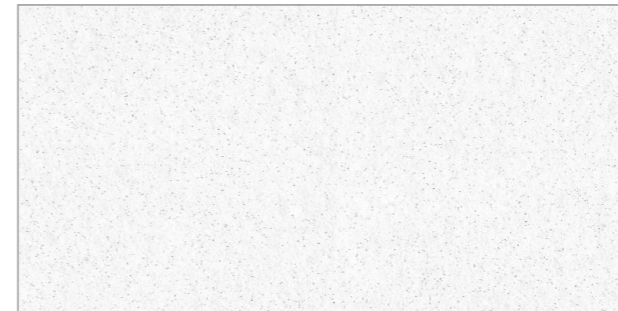
## 600X 1200MM



**GENESIS BIANCO**  
FINISH : POLISHED



**CREST BIANCO**  
FINISH : SATIN



**ROCK BIANCO**  
FINISH : RUSTIC



**DUAL BIANCO**  
FINISH : LAPATO

## 600X600MM



**GENESIS BIANCO**  
FINISH : POLISHED



**CREST BIANCO**  
FINISH : SATIN



**ROCK BIANCO**  
FINISH : RUSTIC

[www.donatovitrified.com](http://www.donatovitrified.com)

SALT & PAPER SERIES |



600X1200MM | 600X600MM

SALT & PAPER SERIES



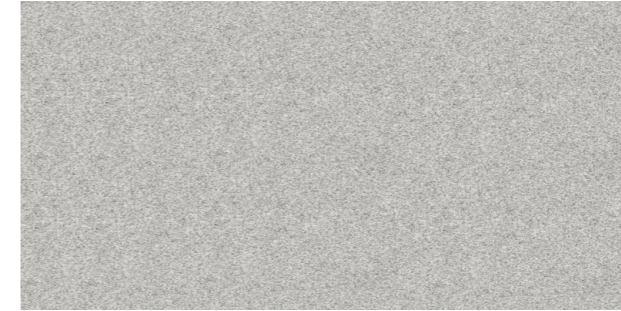
600X1200MM | 600X600MM



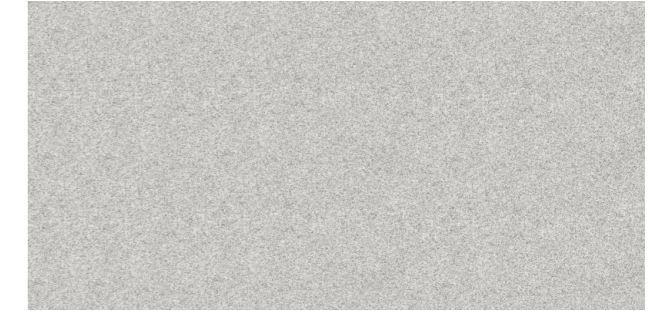
SALT & PAPER SERIES



## 600X 1200MM



**GENESIS PLUTO**  
FINISH : POLISHED



**CREST PLUTO**  
FINISH : SATIN

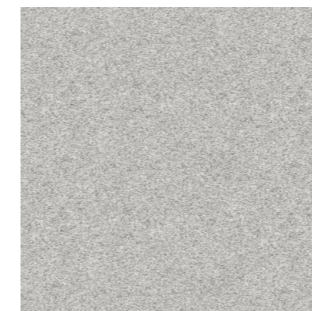


**ROCK PLUTO**  
FINISH : RUSTIC

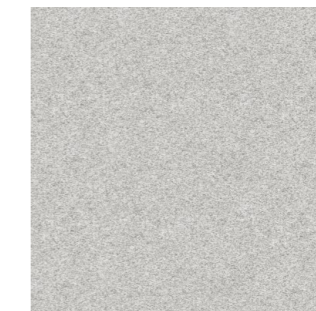


**DUAL PLUTO**  
FINISH : LAPATO

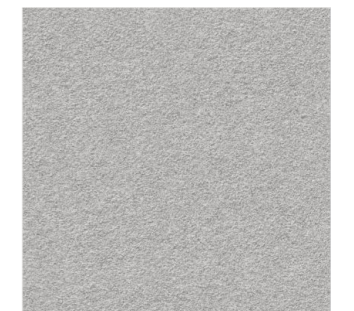
## 600X600MM



**GENESIS PLUTO**  
FINISH : POLISHED



**CREST PLUTO**  
FINISH : SATIN



**ROCK PLUTO**  
FINISH : RUSTIC

[www.donatovitrified.com](http://www.donatovitrified.com)

SALT & PAPER SERIES |

600X1200MM | 600X600MM



SALT & PAPER SERIES

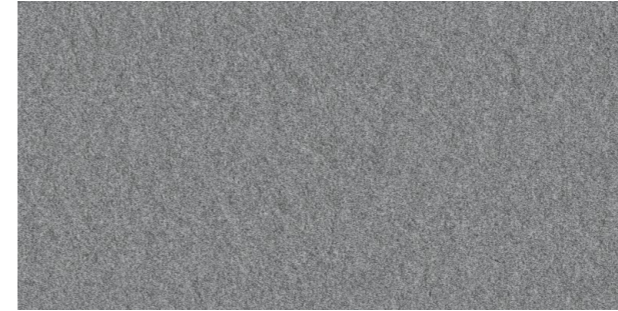
600X1200MM | 600X600MM



SALT & PAPER SERIES



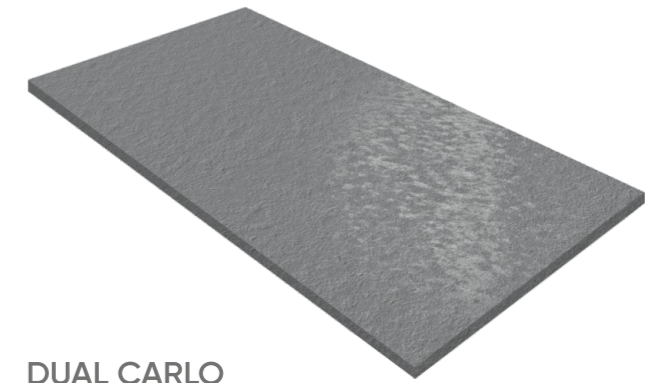
# 600X 1200MM



**CREST CARLO**  
FINISH : SATIN

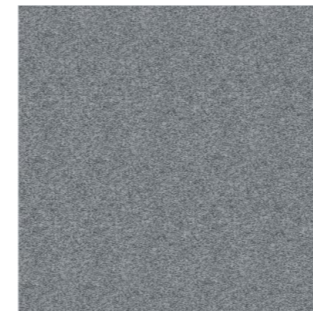


**ROCK CARLO**  
FINISH : RUSTIC



**DUAL CARLO**  
FINISH : LAPATO

# 600X600MM



**CREST CARLO**  
FINISH : SATIN



**ROCK CARLO**  
FINISH : RUSTIC



[www.donatovitrified.com](http://www.donatovitrified.com)

SALT & PAPER SERIES |

600X1200MM | 600X600MM



SALT & PAPER SERIES

600X1200MM | 600X600MM



SALT & PAPER SERIES



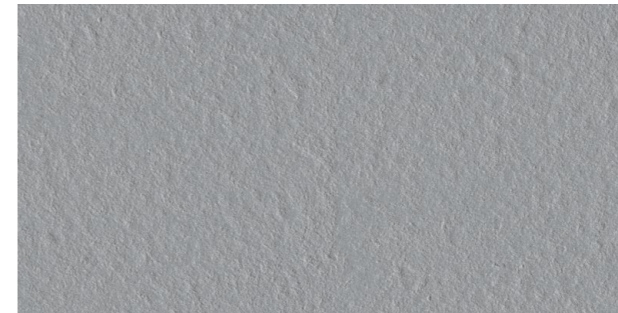
## 600X 1200MM



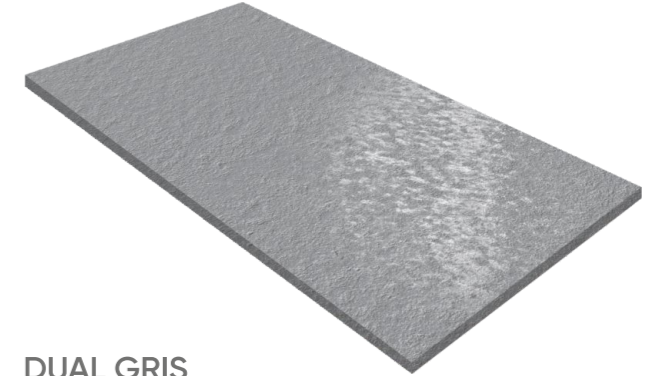
**GENESIS GRIS**  
FINISH : POLISHED



**CREST GRIS**  
FINISH : SATIN

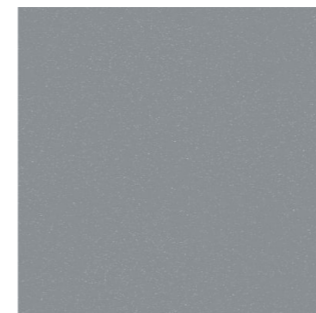


**ROCK GRIS**  
FINISH : RUSTIC

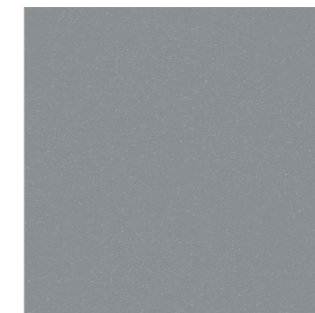


**DUAL GRIS**  
FINISH : LAPATO

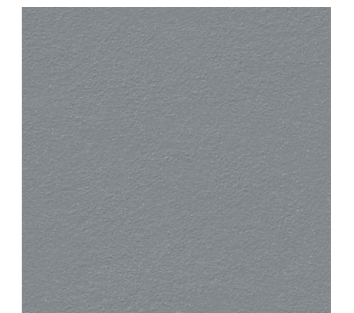
## 600X600MM



**GENESIS GRIS**  
FINISH : POLISHED



**CREST GRIS**  
FINISH : SATIN



**ROCK GRIS**  
FINISH : RUSTIC



[www.donatovitrified.com](http://www.donatovitrified.com)

SALT & PAPER SERIES |

600X1200MM | 600X600MM



SALT & PAPER SERIES

600X1200MM | 600X600MM



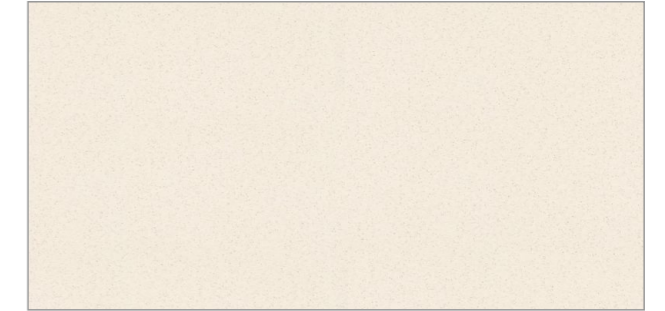
SALT & PAPER SERIES



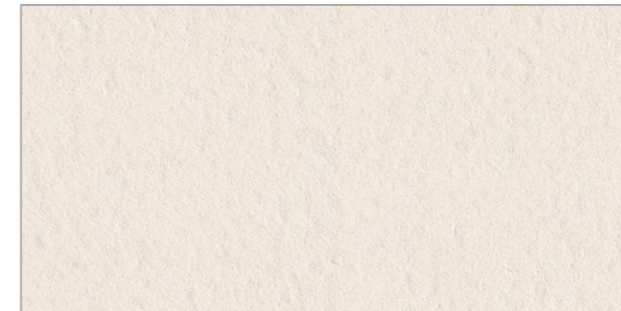
## 600X1200MM



**GENESIS BEIGE**  
FINISH : POLISHED



**CREST BEIGE**  
FINISH : SATIN



**ROCK BEIGE**  
FINISH : RUSTIC



**DUAL BEIGE**  
FINISH : LAPATO

## 600X600MM



**GENESIS BEIGE**  
FINISH : POLISHED



**CREST BEIGE**  
FINISH : SATIN



**ROCK BEIGE**  
FINISH : RUSTIC



[www.donatovitrified.com](http://www.donatovitrified.com)

SALT & PAPER SERIES



600X1200MM | 600X600MM



SALT & PAPER SERIES

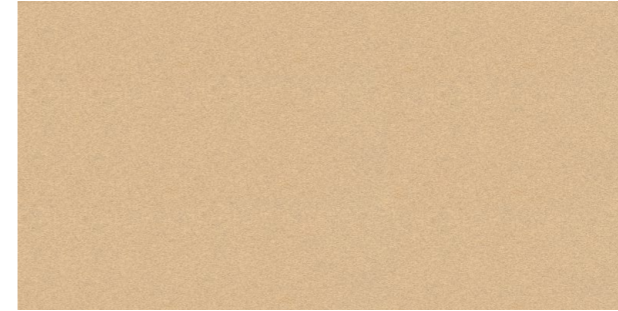
600X1200MM | 600X600MM



SALT & PAPER SERIES



# 600X 1200MM



**GENESIS MINK**  
FINISH : POLISHED



**CREST MINK**  
FINISH : SATIN



**ROCK MINK**  
FINISH : RUSTIC



**DUAL MINK**  
FINISH : LAPATO

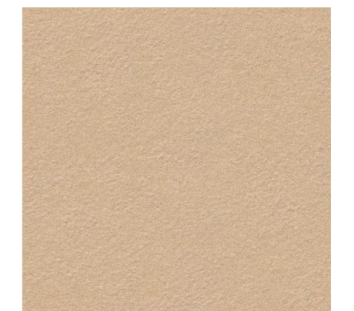
# 600X600MM



**GENESIS MINK**  
FINISH : POLISHED



**CREST MINK**  
FINISH : SATIN



**ROCK MINK**  
FINISH : RUSTIC



[www.donatovitrified.com](http://www.donatovitrified.com)

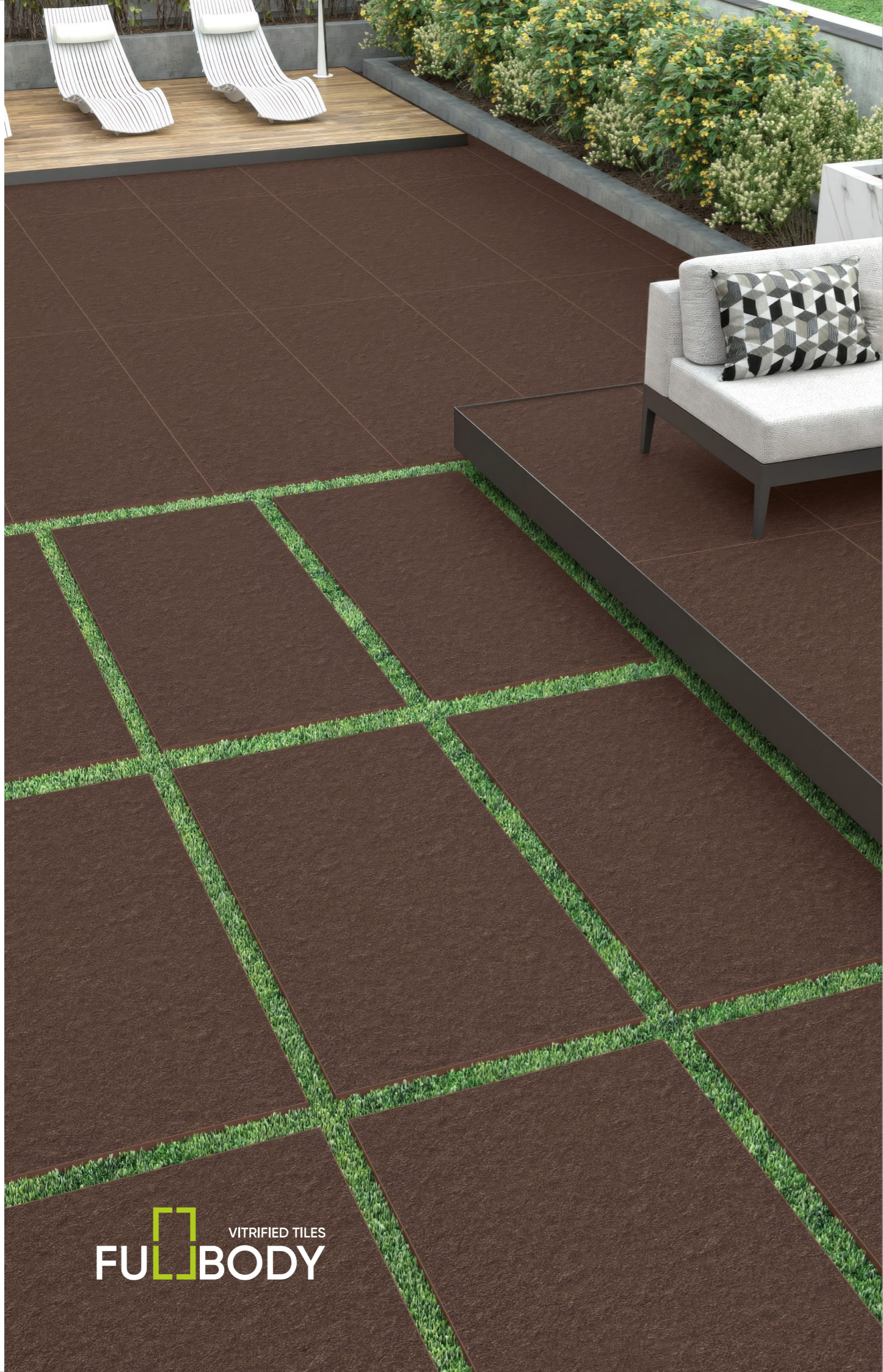
SALT & PAPER SERIES

600X1200MM | 600X600MM



SALT & PAPER SERIES

600X1200MM | 600X600MM

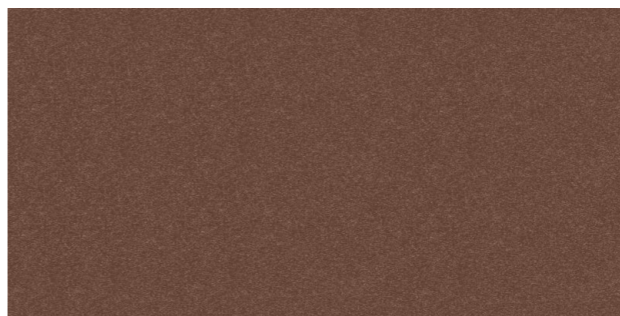


SALT & PAPER SERIES

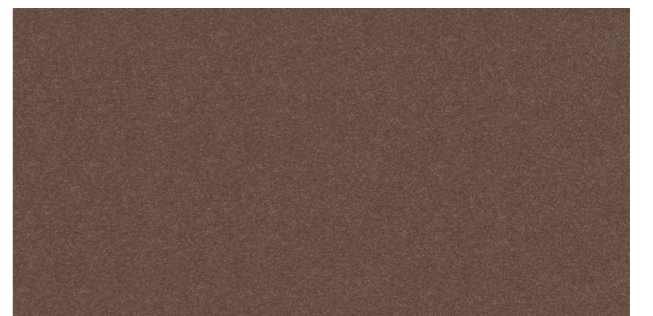
VITRIFIED TILES  
**FULLBODY**

  
**DONATO**  
FULLBODY VITRIFIED TILES

## 600X 1200MM



**GENESIS BROWN**  
FINISH : POLISHED



**CREST BROWN**  
FINISH : SATIN

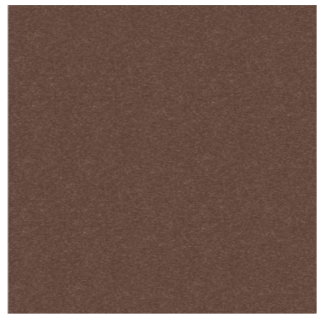


**ROCK BROWN**  
FINISH : RUSTIC

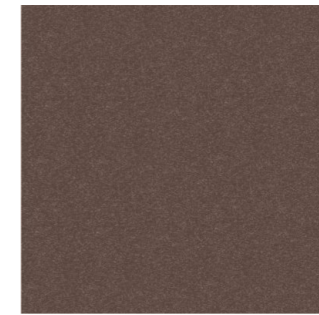


**DUAL BROWN**  
FINISH : LAPATO

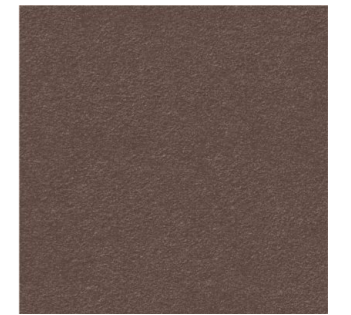
## 600X600MM



**GENESIS BROWN**  
FINISH : POLISHED



**CREST BROWN**  
FINISH : SATIN



**ROCK BROWN**  
FINISH : RUSTIC

[www.donatovitrified.com](http://www.donatovitrified.com)

**SALT & PAPER SERIES** |

600X1200MM | 600X600MM

SALT & PAPER SERIES

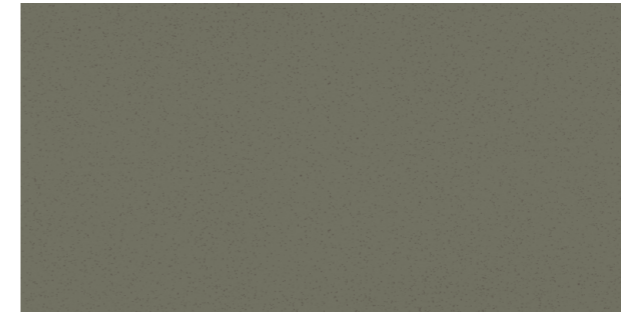


600X1200MM | 600X600MM

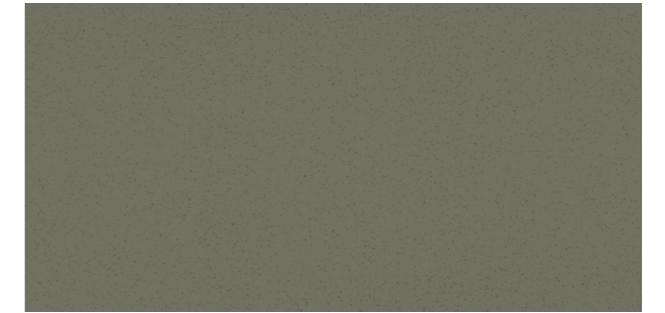


SALT & PAPER SERIES

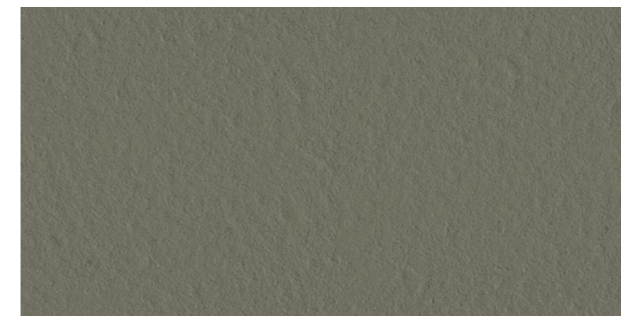
## 600X 1200MM



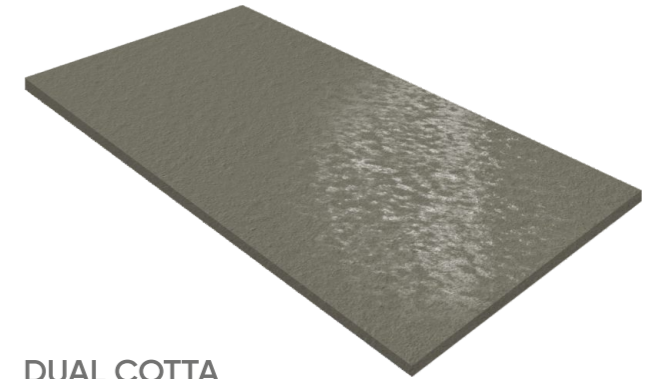
**GENESIS COTTA**  
FINISH : POLISHED



**CREST COTTA**  
FINISH : SATIN



**ROCK COTTA**  
FINISH : RUSTIC



**DUAL COTTA**  
FINISH : LAPATO

## 600X600MM



**GENESIS COTTA**  
FINISH : POLISHED



**CREST COTTA**  
FINISH : SATIN



**ROCK COTTA**  
FINISH : RUSTIC

600X1200MM | 600X600MM

SALT & PAPER SERIES



# INSTALLATION SYSTEMS

SALT & PAPER SERIES



## INSTALLATION ONTO GRASS

Easy to install and removable. Suitable for residential gardens and public parks.



## ADHESIVE INSTALLATION ONTO FOOTING

Corrigible floors continues effect with indoor floors slabs available in standard thickness.



## INSTALLATION ON TO GRAVEL OR SAND

Easy to install and removable Perfect colors and design to enhance contemporary buildings.



## RAISED INSTALLATION ONTO FLAT SURFACES

Easy to inspect. Housing for cables, electrical circuits.

# EFFICIENCY PERFORMANCE



**EASY TO CLEAN**  
(also with the use of pressure washers)



**EASY TO INSTALL**  
Rectified and single work size



**COLOUR REMAINS UNCHANGED OVER TIME**



**HIGH BREAKAGE LOAD**  
(more than- 1,000kg. per slab)



**FROST RESISTANT**



**RESISTANT TO CORROSION FROM SALT**



**OUTDOOR APPLICATION + COORDINATED INDOORS**  
Available in standard thickness for indoor use



**ANTI-SLIP**



**RESISTANT TO STAINS, ACIDS AND CHEMICALS**



**RESISTANT TO THERMAL SHOCK**  
(from - 50°C to + 60°C)



**REMOVABLE, EASY TO INSPECT AND REUSABLE**  
(only 17kg. slab 60x60)



**VERSATILE**  
Various installation systems



**RESISTANT TO ATTACK FROM moulds, moss and verdigris treatments**



**IT DOES NOT REQUIRE SPECIAL TREATMENTS**



**ENVIRONMENTALLY FRIENDLY**  
Rockdeck collections are environmentally free

# TECHNICAL SPECIFICATION



TECHNICAL DETAIL	INTERNATIONAL STD, ISO 13006/EN 176, B1A	DONATO VALUES	METHOD OF TESTING
Deviation in Length & Width	±0.6%	±0.1%	ISO 10545-2
Deviation in Thickness	±5%	±2%	ISO 10545-2
Straightness of Sides	±0.5%	±0.1%	ISO 10545-2
Rectangularity	±0.6%	±0.1%	ISO 10545-2
Surface Flatness	±0.5%	±0.1%	ISO 10545-2
Hardness on Mohs Scale	> 6	> 7	EN 101
Water Absorption	< 0.5%	< 0.05%	ISO 10545-3
Flexural Strength (Mor)	> 35 N/m <sup>2</sup>	> 40 N/m <sup>2</sup>	ISO 10545-4
Abrasion Resistance	< 175 mm <sup>3</sup>	< 145 mm <sup>3</sup>	ISO 10545-6
Skid Resistance	> 0.4	> 0.4	ISO 10545-17
Bulk Density	> 2	> 2.4	DIN 51082
Frost Resistance	Frost Proof	Frost Proof	ISO 10545-12
Chemical Resistance	No Damage	No Damage	ISO 10545-13
Thermal Shock	No Damage	No Damage	ISO 10545-9
Thermal Expansion	< 9 x 10 <sup>-6</sup>	< 6 x 10 <sup>-6</sup>	ISO 10545-8
Stain Resistance	Resistant	Resistant	ISO 10545-14
Moisture Expansion	Nil	Nil	ISO 10545-10
Glossiness	Gloss Meter	Min 90 Reflection	ISO 10545-2
Breaking Strength	1300 N	2000 N	ISO 10545-4

# PACKING DETAILS

SIZE	PCS / BOX	Sq. Mtr.	Sq. Ft.
600MMX1200MM	2	1.44	15.50
600MMX600MM	4	1.44	15.50

**DISCLAIMER:** Company reserves the right to delete & amend either totally or partially, any of the colors, shapes, sizes, references and other technical specifications contained in this catalogue at anytime. The Colors of tiles shown in this catalogue are purely illustrative and limited to printing process. Please refer actual sample before final selection. The details of sizes, colors and references should be verified for typographical errors.